

Michigan Local Food Purchase Assistance Program Impact

The Michigan Department of Education (MDE) coordinates the USDA Local Food Purchase Assistance (LFPA) program from October 2022 through December 2026 to maintain and improve the resiliency in the food and farm supply chain. The program demonstrates that investments in local supply chains can provide beneficial impacts for Michigan farmers and communities.

83
Michigan counties
participated

\$21.6M
Awarded to purchase
locally grown food in
Michigan

7
LFPA
distribution
partners

Who benefited from Michigan LFPA?

Michigan
farms of all
sizes

Michigan
communities

Michigan food
distribution
partners



“We received the fresh produce that came from our local farmers. We can't thank you enough for helping to fill our plates with such delicious foods.”

– Resident who received produce through the program



“In one year, we completed 27 distributions for roughly 179,178 pounds of fresh produce delivered to the doors of homebound seniors, children, and at-risk families as well as on public transportation systems.”

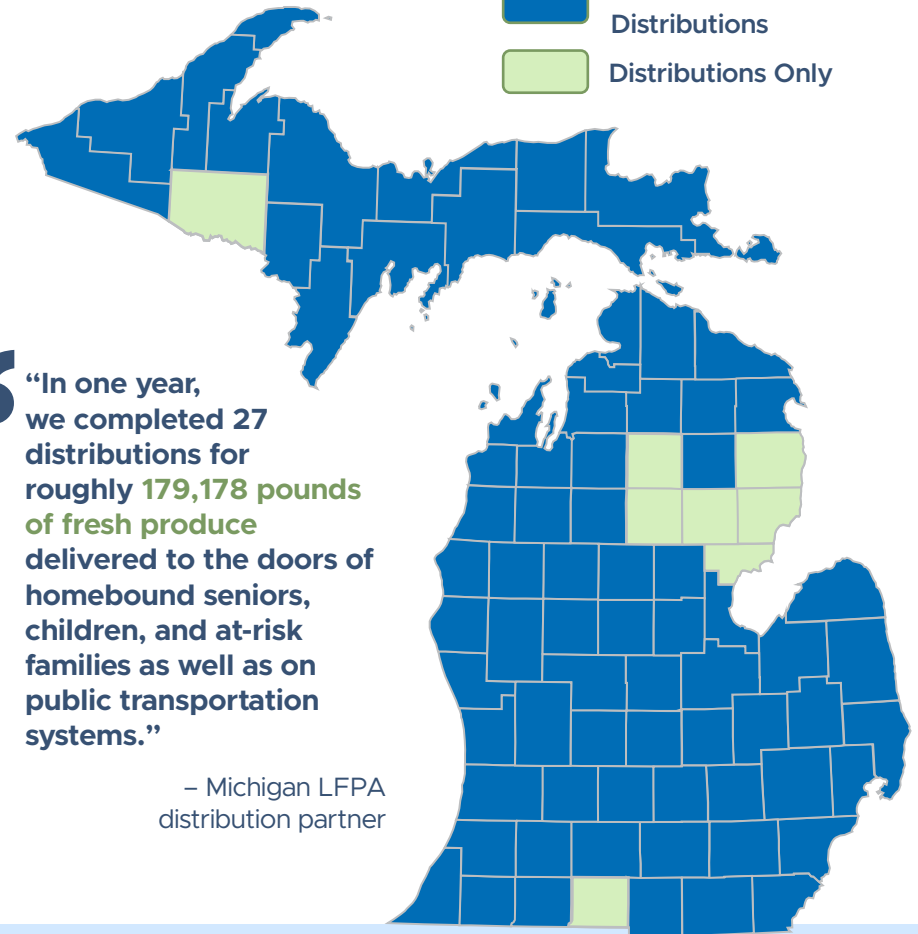
– Michigan LFPA distribution partner

Targeted investments in local food systems can produce measurable impacts for both local farmers and communities.

Scan the QR code to see stories from the field



Both Purchases & Distributions
Distributions Only



LFPA proudly supported by USDA. LFPA concludes December 2026. All information in this document represents data during active LFPA programming.

Thanks to the seven LFPA food distribution partners: Eastern Market, Flint Fresh, Food Bank Council of Michigan, Kalamazoo Valley Community College/ValleyHUB, Mid Michigan Community Action, Thumb Food Policy Council, and West Michigan Food Processing Association and evaluation partner, Michigan State University Center for Regional Food Systems.

540+

Local farms supplied food products for the program

Surveyed farmers reported:

87% ↑

Increase in food produced

96% ↑

Increase in local food distribution opportunities



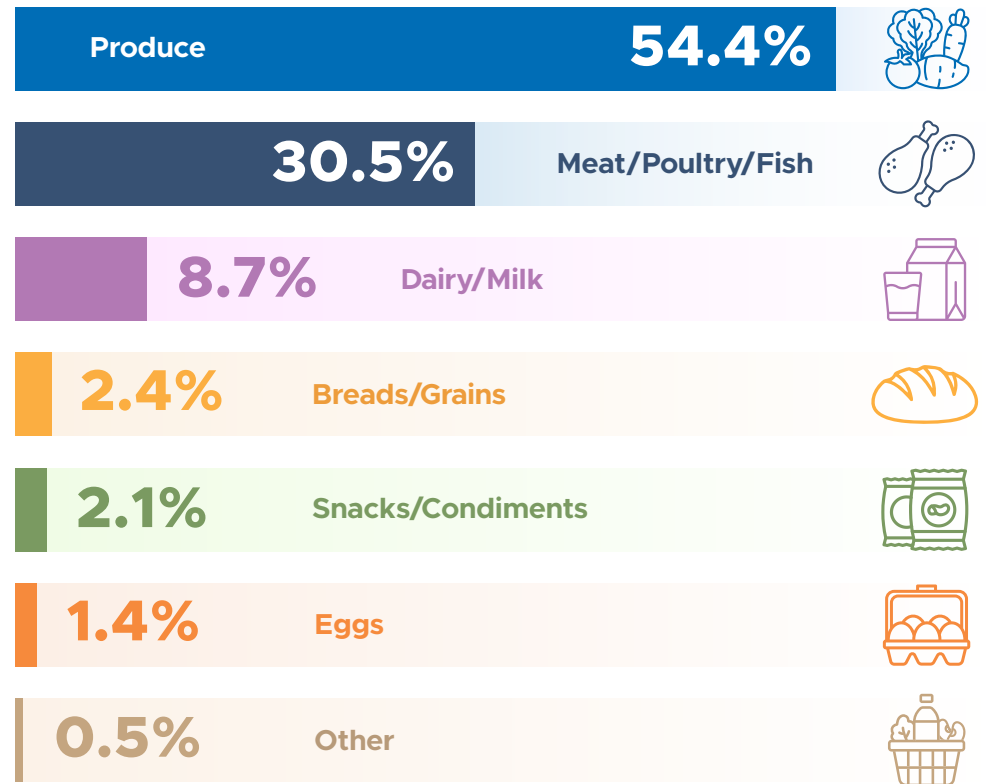
“The Local Food Purchase Assistance program (LFPA) has made an extraordinary impact across Michigan, enhancing our local food distribution network and supporting local producers to provide nutritious food to communities.”

– Tom Priest, Michigan Department of Education

Farmer benefits from LFPA:

- 1 Expanded market opportunities
- 2 Enhanced relationships with agencies and other farmers
- 3 Improved operations
- 4 Increased statewide distribution of healthy, nutritious foods, with a focus on Michigan-grown

Most commonly purchased foods in the Michigan LFPA program:



“Being able to sell our eggs and then have them distributed is excellent because our eggs can help those in need in our community! These eggs would have been donated, and we would have lost a lot of money, but because of this program, we were able to recoup our costs and help local families in need!”

– Michigan farmer supplying to the LFPA

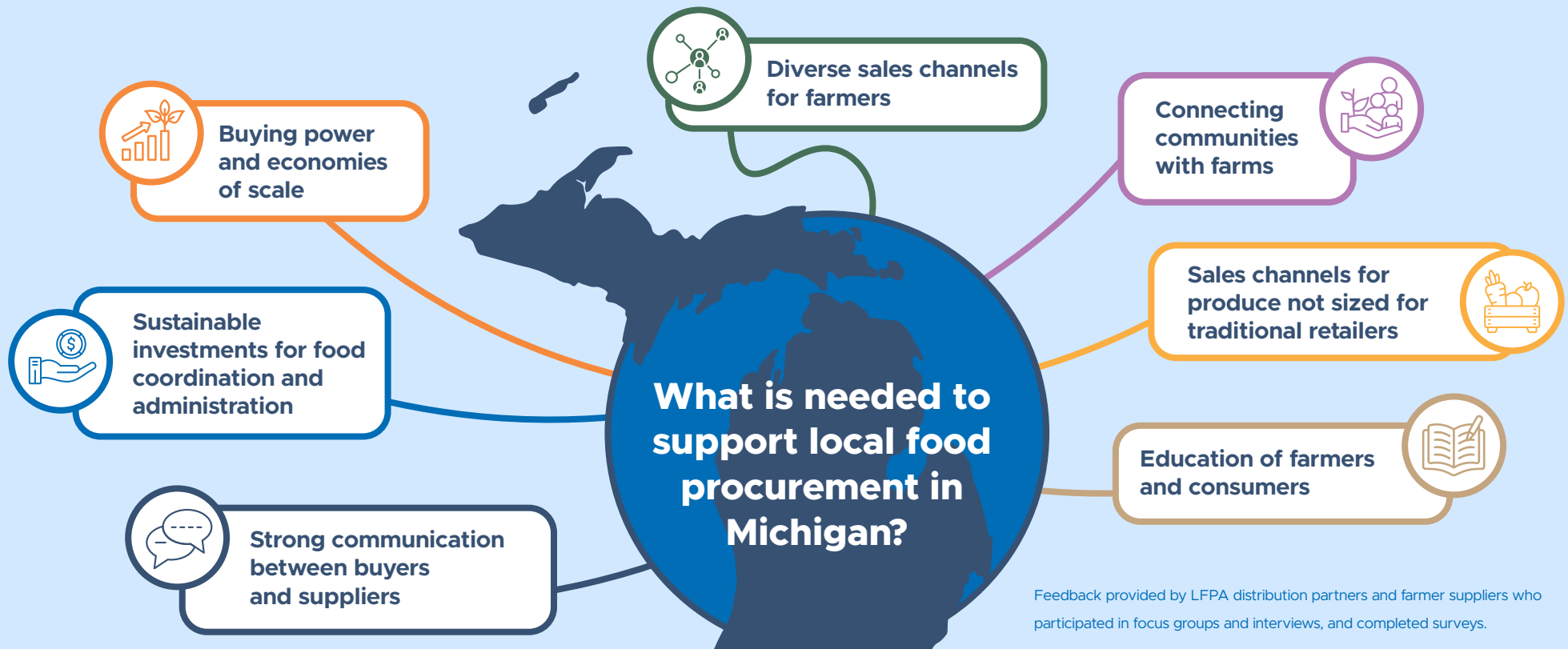


LFPA proudly supported by USDA. LFPA concludes December 2026. All information in this document represents data during active LFPA programming.

Thanks to the seven LFPA food distribution partners: Eastern Market, Flint Fresh, Food Bank Council of Michigan, Kalamazoo Valley Community College/ValleyHUB, Mid Michigan Community Action, Thumb Food Policy Council, and West Michigan Food Processing Association and evaluation partner, Michigan State University Center for Regional Food Systems.

Lessons Learned from the Michigan Local Food Purchase Assistance Program

The Michigan Department of Education (MDE) coordinates the USDA Local Food Purchase Assistance (LFPA) program from October 2022 through December 2026 to maintain and improve the resiliency in the food and farm supply chain. The program demonstrates that investments in local supply chains can provide beneficial impacts for Michigan farmers and communities.



“Targeted investments in local food systems can produce measurable impacts for farmers and communities.”

– LFPA Michigan Evaluation Report



“The Local Food Purchase Assistance program was a game changer on so many levels. Combining support for small family farms while increasing access and all while creating local networks that worked together locally, regionally, and nationally.”

– Findings of the 2025 National Food Hub Survey



LFPA proudly supported by USDA. LFPA concludes December 2026. All information in this document represents data during active LFPA programming.

Thanks to the seven LFPA food distribution partners: Eastern Market, Flint Fresh, Food Bank Council of Michigan, Kalamazoo Valley Community College/ValleyHUB, Mid Michigan Community Action, Thumb Food Policy Council, and West Michigan Food Processing Association and evaluation partner, Michigan State University Center for Regional Food Systems.

Key Outcomes from Targeted Investments in Local Food

Sales tripled for food hubs

across the country during the LFPA funding period (2021-2025), according to the findings of the *2025 National Food Hub Survey*.

New market opportunities

for Michigan's family farms.

Reduced food waste

by funding purchases of produce seconds.

Strengthened relationships

between consumers and local farms.

Increased sales to schools

of fresh fruits, vegetables, and dry beans through 10 Cents a Meal for Michigan's Kids and Farms each year since 2016.



“The flexible nature of LFPA programming has encouraged creative distribution models, providing food where needed most while increasing access to a more diverse variety of products than previously available to those who rely on food assistance programs.”

– Tom Priest, Michigan Department of Education



“The growth in the business operations of our partner urban farms has been tremendous. Most of the farms are looking forward to increased output, but significant improvement has been shown in packaging, invoicing, and logistics as well.”

– MI LFPA distribution partner



“Losing the program will impact my bottom line. It will affect hundreds of people in our community.”

MI LFPA farmer supplier, when speaking on the loss of LFPA funding in Michigan

Scan the QR code to see stories from the field



LFPA proudly supported by USDA. LFPA concludes December 2026.

All information in this document represents data during active LFPA programming.

Thanks to the seven LFPA food distribution partners: Eastern Market, Flint Fresh, Food Bank Council of Michigan, Kalamazoo Valley Community College/ValleyHUB, Mid Michigan Community Action, Thumb Food Policy Council, and West Michigan Food Processing Association and evaluation partner, Michigan State University Center for Regional Food Systems.

Maintaining Momentum

for producing, selling, and distributing local food through the Michigan Local Food Purchase Assistance program

The Michigan Department of Education (MDE) coordinates the USDA Local Food Purchase Assistance (LFPA) program from October 2022 through December 2026 to maintain and improve the resiliency in the food and farm supply chain. The program demonstrates that investments in local supply chains can provide beneficial impacts for Michigan farmers and communities.

Programs like Michigan Local Food Purchase Assistance can:



Invest financially in local and regional farm purchases



Increase buying power for food distributors



Improve relationships between food distributors and farmers



Create more efficient farm-based operations



Expand food distribution in new and existing locations



Provide farmers with new market opportunities



Develop educational material for farmers who have sold directly to a variety of markets



“The LFPA program has had a transformational impact on the community. The market created gives growers the support they need to see value in scaling their operations.”

– LFPA Michigan Evaluation Report



“The Michigan LFPA program demonstrates that coordinated partnerships, intentional relationship building, and strategic investments in local food systems can increase access to locally produced foods, strengthen farm operations, and support communities across the state.”

– LFPA Michigan Evaluation Report



LFPA proudly supported by USDA. LFPA concludes December 2026. All information in this document represents data during active LFPA programming.

Thanks to the seven LFPA food distribution partners: Eastern Market, Flint Fresh, Food Bank Council of Michigan, Kalamazoo Valley Community College/ValleyHUB, Mid Michigan Community Action, Thumb Food Policy Council, and West Michigan Food Processing Association and evaluation partner, Michigan State University Center for Regional Food Systems.

Surveyed farmers supplying the program reported experiencing:

- 100% Increase in sales
- 96% Increase in distribution throughout their local community
- 92% Expansion of geographical reach
- 46% Increase in market demand, planning, and food production

Surveyed farmers reported a reduction in barriers related to:

- 86% Transportation efforts
- 76% Rising production costs
- 69% Storage and labor costs

Increased access to healthy foods can support healthier Michigan communities*



Investing in locally and regionally produced foods can support vulnerable populations, kids, and older adults



Eating more fruits and vegetables can reduce risk of chronic disease*

*Centers for Disease Control and Prevention. (January 23, 2025). Healthy food environments. Retrieved from <https://www.cdc.gov/nutrition/php/healthy-food-environments/index.html>



“The biggest impact on our end from LFPA has been the buying power.”

– MI LFPA implementing partner



“LFPA taught us how to buy local. The network of pantries and community support agencies that they have worked with are glad to have developed new systems to be able to spend their food purchasing dollars with local farmers and producers, so that they can have twice the impact. After working with some of our growers to design and provide labels, we received a shipment of salad greens from one of our farms with a new label that they had independently designed and produced. Support from LFPA built their capacity to carry on labeling household packs of produce within their regular operations.”

– MI LFPA distribution partner



“Michigan LFPA improved local and regional food supply chains, expanded economic opportunities for local farmers throughout Michigan, and increased purchases from farmers at fair market values, using food that would have been sold at reduced pricing or unused surplus in previous years. LFPA is a win-win-win for local producers, Michigan food distributors, and our food insecure neighbors who have access to high quality, nutritious food grown by farmers in their own communities. It has strengthened the bond between our Michigan farmers and their communities and planted long-term relationships that benefit everyone involved.”

– Tom Priest, Michigan Department of Education

Scan the QR code to see stories from the field



LFPA proudly supported by USDA. LFPA concludes December 2026. All information in this document represents data during active LFPA programming.

Thanks to the seven LFPA food distribution partners: Eastern Market, Flint Fresh, Food Bank Council of Michigan, Kalamazoo Valley Community College/ValleyHUB, Mid Michigan Community Action, Thumb Food Policy Council, and West Michigan Food Processing Association and evaluation partner, Michigan State University Center for Regional Food Systems.